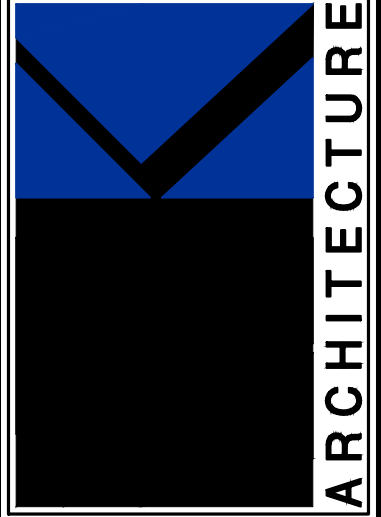


ELECTRICAL NOTES
1.. ALL GENERAL PURPOSE RECEPTACLES WITHIN 6 FEET OF A SINK SHALL BE GFCI PROTECTED. ALL 120V SINGLE PHASE EQUIPMENT RECEPTACLES TO BE GFCI PROTECTED ON GFI BREAKER CIRCUIT
2. ALL ELECTRICAL WIRING EXPOSED TO VIEW IN EMT
3. ALL ELECTRICAL IN CONDUITS, ARMORED CABLE OR BLUE CARLON CONDUIT
4. ALL 110V EQUIPMENT RECEPTACLES MUST BE GFCI PROTECTED PER NEC 210.8(B)(2).
5. ALL CONDUITS RUN PARALLEL OR PERPENDICULAR TO STRUCTURAL FRAMING.
6. ALL 10-VOLT WIRING BY OTHERS UNDER SEPARATE PERMIT.
7. INCREASE WIRE SIZES FOR RUNS OVER 100 PER NEC.

WIRING NOTES
BELOW GRADE: SINGLE-- OR MULTI--CONDUCTOR COPPER WIRE WITH GROUND, MEETING N.E.C. AND NEMA REQUIREMENTS, IN APPROVED NONMETALLIC CONDUIT. CONDUIT MAY BE RUN IN OR BELOW CONCRETE, AND CONCEALED IN WALLS TO FIRST BOXES. ALL PVC COMPONENTS (PIPING, FITTINGS, CEMENT, ETC.) SHALL BE FROM THE SAME MANUFACTURER.
EXTERIOR ABOVE GRADE: SINGLE-- OR MULTI--CONDUCTOR COPPER WIRE WITH GROUND, MEETING N.E.C. AND NEMA REQUIREMENTS, IN APPROVED METALLIC OR NONMETALLIC CONDUIT. ALL COMPONENTS (PIPING, FITTINGS, ETC.) SHALL BE FROM THE SAME MANUFACTURER.
NOTE: MAXIMUM LENGTH OF FLEXIBLE CONDUIT SHALL BE SIX FEET (6).
EXTERIOR EQUIPMENT: SINGLE-- OR MULTI--CONDUCTOR COPPER WIRE WITH GROUND, MEETING N.E.C. AND NEMA REQUIREMENTS, IN APPROVED LIQUDTIGHT FLEXIBLE METALLIC OR NONMETALLIC CONDUIT (MINIMUM 3/4"). ALL COMPONENTS (PIPING, FITTINGS, ETC.) SHALL BE FROM THE SAME MANUFACTURER.
NOTE: MAXIMUM LENGTH OF FLEXIBLE CONDUIT BETWEEN MEANS OF DISCONNECT (OR JUNCTION BOX) AND EQUIPMENT SHALL BE THREE FEET (3).
INTERIOR: SINGLE-- OR MULTI--CONDUCTOR COPPER WIRE WITH GROUND, MEETING N.E.C. AND NEMA REQUIREMENTS, IN APPROVED METALLIC (EMT) CONDUIT. ALL COMPONENTS (PIPING, FITTINGS, ETC.) SHALL BE FROM THE SAME MANUFACTURER. CONDUITS SHALL BE CONCEALED IN OR BEHIND CEILINGS, WALLS, OR FLOORS, EXCEPT WHERE EXPOSED RACEWAYS ARE SPECIFICALLY PERMITTED.
NOTE: EMT SHALL NOT BE INSTALLED IN LOCATIONS (1) SUBJECT TO SEVERE DAMAGE, (2) IN CONTACT WITH EARTH, (3) IN CONCRETE SLABS ON GRADE, (4) OTHER LOCATIONS AS LISTED IN N.E.C. 2014, ARTICLE 358.12.
EXCEPTION: NON--METALLIC SHEATHED CABLE (NM, NMC, NMS) MAY BE USED WITHIN DWELLING UNITS, IN COMPLIANCE WITH N.E.C. 2014, ARTICLE 334.
ELECTRICAL SYSTEM EXPANSION: ANY PANELBOARD MOUNTED SO THAT ITS FRONT FACE IS FLUSH WITH THE FINISHED WALL SHALL HAVE ONE (1) 3/4" EMT CONDUIT INSTALLED FROM PANELBOARD TO ACCESSIBLE CEILING SPACE. FOR EVERY FOUR (4) OR MAJOR FRACTION THEREOF, POLES INDICATED AS "SPACE" OR "SPARE" IN THE PANELBOARD SCHEDULE PER THESE DOCUMENTS.
EXCEPTION NO. 1: PANELBOARDS INSTALLED ON A WALL SURFACE, WHERE AT LEAST THREE (3) SIDES, NOT INCLUDING THE FRONT, REMAIN ACCESSIBLE AFTER CERTIFICATE OF OCCUPANCY SHALL NOT BE REQUIRED TO MEET #16320.5.
EXCEPTION NO. 2: DWELLING UNITS SHALL NOT BE REQUIRED TO MEET #16320.5.
ELECTRICAL BOXES: ALL OUTLET, DEVICE, AND JUNCTION BOXES SHALL BE STANDARD 4" SQUARE GALVANIZED STEEL OR APPROVED PLASTIC, 1--1/2" DEEP, WITH DEVICE RINGS OF THE SAME MATERIAL, UNLESS OTHERWISE NOTED. GALVANIZED BOXES SHALL BE MANUFACTURED BY APPLETON, RACO, STEEL CITY, RACO OR APPROVED EQUAL. PLASTIC BOXES SHALL BE ALLIED, NELCO, CARLON, OR EQUAL. ALL ELECTRICAL BOXES MUST BE ACCESSIBLE AFTER CERTIFICATE OF OCCUPANCY.
THRU--FEEDS: MAINTAIN THRU--FEEDS ON ALL ELECTRICAL DEVICES AT C.O.

ELECTRICAL GENERAL NOTES
1. DRAWINGS ARE DIAGRAMMATIC. DO NOT SCALE DRAWINGS FOR THE EXACT LOCATION OF EQUIPMENT, CONDUITS, LIGHTING FIXTURES RECEPTACLES, ETC.
2. COORDINATE ALL DEVICE LOCATIONS WITH OTHER TRADES AND WITH ARCHITECTURAL, INTERIOR DESIGN AND FURNISHING PLANS.
3. ALL ELECTRICAL WORK SHALL BE PER THE NATIONAL ELECTRIC CODE, AND THE FLORIDA BUILDING CODE, AND ANY LOCAL CODES OR ORDINANCES.
4. CONTRACTOR SHALL PAY FOR ALL FEES, TAXES AND PERMITS.
5. ALL POWER AND LINE VOLTAGE CONTROL WIRING BY THE ELECTRICAL CONTRACTOR. HVAC CONTROL WIRING BY MECHANICAL CONTRACTOR. CONDUIT INSTALLED BY ELECTRICIAN.
6. ALL PANELS SHALL HAVE COMPLETELY FILLED OUT DIRECTORIES.
7. THE CONTRACTOR SHALL KEEP AN UPDATED SET OF AS--BUILT DRAWINGS ON THE JOB--SITE AT ALL TIMES. FINISHED AS--BUILT DRAWINGS SHALL BE TURNED OVER TO THE OWNER AT THE TIME OF PROJECT COMPLETION.
8. ALL WIRE AND CABLE SHALL BE COPPER, MINIMUM SIZE #12 AWG (#14 AWG SHALL BE USED FOR CONTROL WORK). SIZE #10 AWG AND SMALLER SHALL BE SOLID TYPE THINW OR THINW, SIZES #8 AWG AND LARGER SHALL BE STRANDED TYPE THW OR THINW. ALL WIRING SHALL BE INSTALLED IN EMT TYPE CONDUIT (EXCEPTION: 6" FIXTURE AND EQUIPMENT DROPS AND SIMILAR WHIPS).
9. CONTRACTOR SHALL VISIT THE JOB SITE AND THOROUGHLY FAMILIARIZE HIMSELF WITH ALL THE EXISTING CONDITIONS.
10. ALL REQUIRED INSURANCE SHALL BE PROVIDED BY THIS CONTRACTOR FOR PROTECTION AGAINST PUBLIC LIABILITY AND PROPERTY DAMAGE FOR THE DURATION OF THE WORK.
11. THE ELECTRICAL CONTRACTOR SHALL PROVIDE A GUARANTEE AGAINST DEFECTIVE WORKMANSHIP, MATERIALS AND EQUIPMENT FOR A PERIOD OF 1 YEAR FROM THE DATE OF ACCEPTANCE.
12. AT DATA/COMM/TEL OUTLETS SHOWN, PROVIDE J--BOX AND 3/4" CONDUIT TO 6" ABOVE CEILING. FACE PLATE AND WIRING BY OTHERS.
13. COORDINATE ALL CONDUIT REQUIREMENTS WITH HVAC CONTROLS, FIRE ALARM, SECURITY AND OTHER TRADES.
14. MINOR DETAILS NOT USUALLY SHOWN OR SPECIFIED BUT NECESSARY FOR PROPER OPERATION AND CONSISTENT WITH GOOD WORKMANSHIP, ARE TO BE INCLUDED BY THE CONTRACTOR IN HIS ESTIMATE, THE SAME AS IF SHOWN IN THE DRAWINGS OR SPELLED OUT IN THE SPECIFICATIONS.
15. THE ELECTRICAL CONTRACTOR SHALL ADDRESS ANY PRE--BID AND/OR FIELD DISCOVERED PROBLEMS AND OR CONFLICTS, ETC. VIA TYPEWRITTEN RFI TO THE ARCHITECT FOR RESOLUTION PRIOR TO THE BID DATE.
16. MATERIALS OR PRODUCTS SPECIFIED HEREIN AND/OR INDICATED ON DRAWINGS BY TRADE NAME, MANUFACTURER'S NAME OR CATALOG NUMBER SHALL BE PROVIDED AS SPECIFIED OR EQUAL. ALL PROPOSED SUBSTITUTIONS TO ITEMS SPECIFIED ON THESE PLANS ARE TO BE SUBMITTED BY THE CONTRACTOR TO THE ARCHITECT PRIOR TO THE DEADLINE COORDINATED BY BIDDING AUTHORITY.
17. APPROVALS OF "OR EQUIVALENT" SUBSTITUTIONS MAY BE COMMUNICATED TO ALL BIDDERS AS AN ADDENDUM TO THE CONTRACT DOCUMENTS AS DETERMINED NECESSARY BY ENGINEER/ARCHITECT.
18. ANY CONTRACTOR WISHING TO SUBMIT FOR AN "OR EQUIVALENT" SUBSTITUTION WILL SUBMIT WITH HIS REQUEST COMPLETE CATALOG INFORMATION TO PERMIT EVALUATION OF THE PRODUCT, AND IN THE CASE OF LIGHTING FIXTURES, A PHOTOMETRIC POINT--BY--POINT REPORT FOR EACH AREA AFFECTED BY SUBSTITUTION(S).
19. CONTRACTOR SHALL VERIFY EXACT REQUIREMENTS FOR MECHANICAL EQUIPMENT FROM MANUFACTURERS RECOMMENDATIONS PRIOR TO ROUGHING IN CONDUIT SIZE, WIRE SIZE AND CIRCUIT PROTECTION SIZE ACCORDINGLY. IF REQUIREMENTS ARE LARGER THAN CALLED FOR ON THE ELECTRICAL PLANS, NOTIFY THE ARCHITECT IMMEDIATELY.

MK Architecture, LLC hereby reserves its common law copyright and other property rights in these plans, designs, arrangements and ideas. These ideas, plans and designs are not to be reproduced, changed or copied in any form or manner whatsoever, nor are they to be assigned to any third party without first obtaining the express written permission from MK Architecture, LLC. Contractor shall verify and be responsible for all dimensions and conditions of the job. MK Architecture, LLC shall be notified in writing of any variations or discrepancies from the dimensions, conditions and specifications shown on these drawings. All construction shall be in accordance with the current Florida Building Code.



MK Architecture LLC
8200 College Parkway, Suite 101
Fort Myers, Florida 33919
239.482.2121
AR10564 ID6790
www.MK-ARCH.com


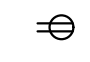





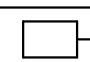

JOB: MK250158
DATE: 08-05-2025
DRWN. BY:
CAD REF:

SHEET
E1

CONSTRUCTION DOCUMENTS FOR
COFFEE RUSH
1189 SW PINE ISLAND ROAD
CAPE CORAL, FL 33991

No:	REVISIONS
△	-
△	-
△	-
△	-
△	-

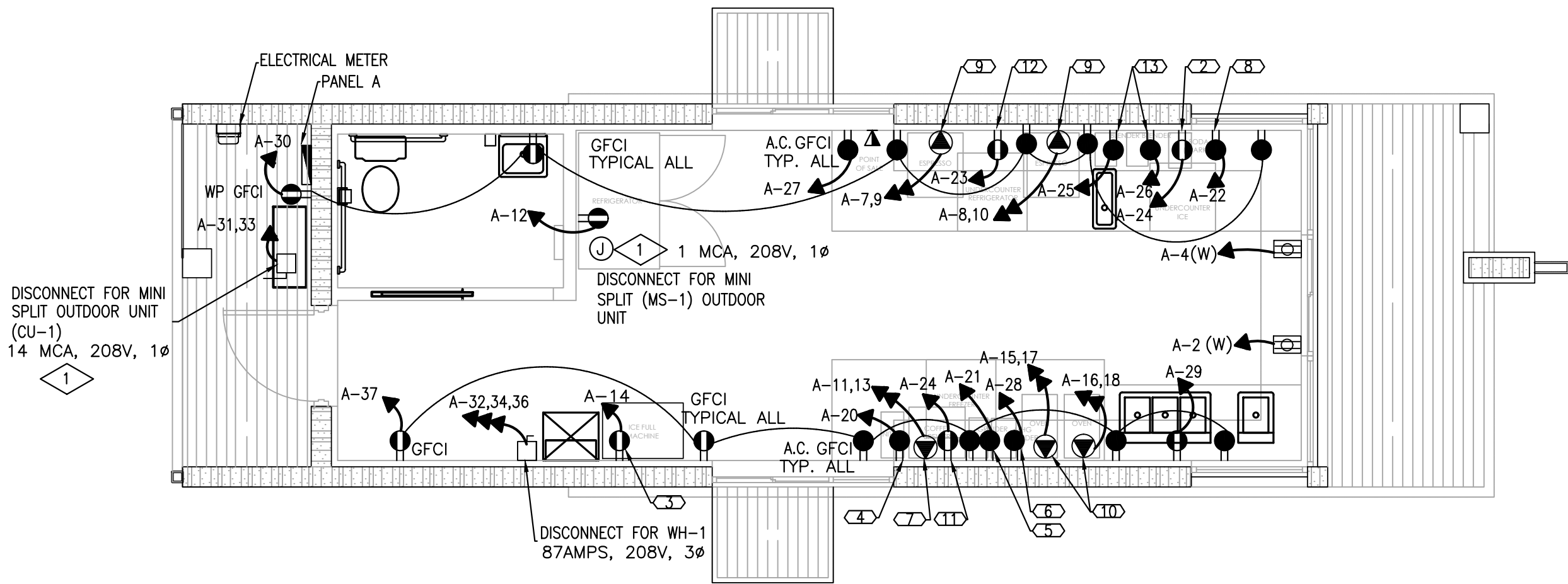
C:\USERS\RITA\ONEDRIVE\DESKTOP\DYNAMIC\COFFEE RUSH\PINE ISLAND\CAD\ELECTRICALSET.DWG \ August 29, 2025

RECEPTACLE, DATA & TELEVISION SYMBOL LEGEND		
SYMBOL	DESCRIPTION	COMMENT
	DOUBLE DUPLEX	2 GANG, 4 OPENING
	DUPLEX RECEPTACLE ----	MOUNT AT 18" AFF UNLESS OTHERWISE NOTED
	GFI DUPLEX----	MOUNT AT 18" AFF UNLESS OTHERWISE NOTED
	ABOVE COUNTER GFI RECEPTACLE ----	MOUNT AT 6" ABOVE COUNTER UNLESS OTHERWISE NOTED
	ABOVE COUNTER RECEPTACLE ----	MOUNT 6" ABOVE UNLESS OTHERWISE NOTED
	COMBINATION COMMUNICATION DATA/TEL/COMM OUTLET ----	VERIFY EXACT MOUNTING LOCATION
	DEDICATED EQUIPMENT RECEPTACLE	VERIFY EXACT MOUNTING LOCATION
	JUNCTION BOX. SIZE AS REQUIRED TO FIT APPLICATION	-----
	SERVICE DISCONNECT, COORDINATE SIZE, TYPE & LOCATION W/ EQUIPMENT PROVIDER/INSTALLER	VERIFY EXACT MOUNTING LOCATION

KITCHEN EQUIPMENT SCHEDULE							
		WATTS	HP	AMP	VOLT/PH	C/B SIZE	WIRE SIZE
01	REACH IN REFRIGERATOR			6.2	120/1	20A/1P	2#12 THWN CU, 1#12 G.-1/2" C.
02	UNDERCOUNTER ICE MAKER			8.6	120/1	20A/1P	2#12 THWN CU, 1#12 G.-1/2" C.
03	UPRIGHT ICE MACHINE			12	120/1	20A/1P	2#12 THWN CU, 1#12 G.-1/2" C.
04	NITRO DISPENSER			2.8	120/1	20A/1P	2#12 THWN CU, 1#12 G.-1/2" C.
05	BULK COFFEE GRINDER			9	120/1	20A/1P	2#12 THWN CU, 1#12 G.-1/2" C.
06	TWIN COFFEE GRINDER			11	120/1	20A/1P	2#12 THWN CU, 1#12 G.-1/2" C.
07	TWIN COFFEE BREWER			25	208/1	30A/2P	2#10 THWN CU, 1#10 G.-3/4" C.
08	CO2 WATER DISPENSER	250			120/1	20A/1P	2#12 THWN CU, 1#12 G.-1/2" C.
09	ESPRESSO MACHINE	4600			208/1	30A/2P	2#10 THWN CU, 1#10 G.-3/4" C.
10	HIGH SPEED OVEN	6000			208/1	40A/2P	2#8 THWN CU, 1#10 G.-1" C.
11	UNDERCOUNTER FREEZER			2.3	120/1	20A/1P	2#12 THWN CU, 1#12 G.-1/2" C.
12	UNDERCOUNTER REFRIGERATOR			2.0	120/1	20A/1P	2#12 THWN CU, 1#12 G.-1/2" C.
13	VITAMIX	800			120/1	20A/1P	2#12 THWN CU, 1#12 G.-1/2" C.

NOTES ON ELECTRICAL POWER PLAN

- VERIFY ALL ELECTRICAL EQUIPMENT REQUIREMENTS WITH OWNER AND WITH EQUIPMENT SUPPLIER PRIOR TO INSTALLATION.
- VERIFY EXACT LOCATIONS AND MOUNTING HEIGHT OF EACH OUTLET FOR KITCHEN EQUIPMENT.
- FIELD VERIFY EXACT RECEPTACLE LOCATIONS AND COORDINATE WITH OWNER PRIOR TO INSTALLATION.
- PROVIDE ALL REQUIRED ELECTRICAL MATERIALS TO MAKE FINAL CONNECTIONS KITCHEN EQUIPMENT.



ELECTRICAL POWER PLAN

SCALE: 1/4"=1'-0"

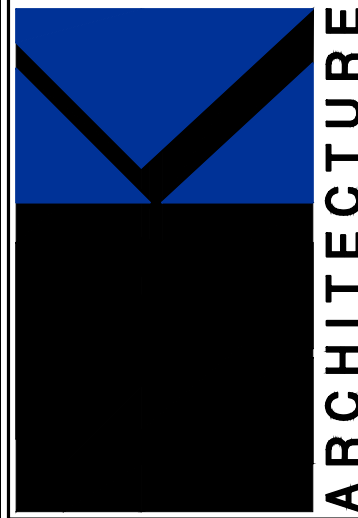
KEY NOTES

- 1 INDOOR UNIT (MS-1) TO BE WIRED FROM OUTDOOR UNIT ON THE SAME CIRCUIT. SEE MANUFACTURER SCHEMATIC DIAGRAM.
- NOTES
- LOW VOLTAGE AND DATA PLANS NOT INCLUDED, PROVIDED BY OTHERS.
- ELECTRICAL CONTRACTOR TO PROVIDE CLEARANCES FOR ELECTRICAL EQUIPMENT PER NEC110.26
 - ELECTRICAL OUTLETS AT ALL COUNTERS TO BE MOUNTED HORIZONTAL WITH THE LOWER PORTION OF THE BOX AT 38" ABOVE F.F.

No:	REVISIONS
1	-
2	-
3	-
4	-
5	-

CONSTRUCTION DOCUMENTS FOR
COFFEE RUSH
1189 SW PINE ISLAND ROAD
CAPE CORAL, FL 33991

MK Architecture LLC
8200 College Parkway, Suite 101
Fort Myers, Florida 33919
239.482.2121
AR10564 ID6790
www.MK-ARCH.com



JOB: MK250158
DATE: 08-05-2025
DRWN. BY:
CAD REF:

SHEET
E2

MK Architecture, LLC hereby reserves its common law copyright and other property rights in these plans, designs, arrangements and ideas. These ideas, plans and designs are not to be reproduced, changed or copied in any form or manner whatsoever, nor are they to be assigned to any third party without first obtaining the express written permission from MK Architecture, LLC. Contractors shall verify and be responsible for all dimensions and conditions of the job. MK Architecture, LLC shall be notified in writing of any variations or discrepancies from the dimensions, conditions and specifications shown on these drawings. All construction shall be in accordance with the current Florida Building Code.

C:\USERS\RITA\ONEDRIVE\DESKTOP\DYNAMIC\COFFEE RUSH\ PINE ISLAND\CAD\ELECTRICALSET.DWG \ August 29, 2025

LIGHTING & SWITCH SYMBOL LEGEND		
SYMBOL	DESCRIPTION	COMMENT
	TYPICAL LAY IN LED LIGHT	SEE FIXTURE SCHEDULE
	EMERGENCY LED LIGHT FIXTURE SUB LETTER INDICATES FIXTURE TYPE	SEE FIXTURE SCHEDULE
	SINGLE POLE SWITCH (20 AMP)	MOUNT AT 48" AFF UNLESS OTHERWISE NOTED
	OCCUPANT OVERRIDE SWITCH	MOUNT AT 48" AFF UNLESS OTHERWISE NOTED
	FAN/LIGHT SWITCH OPERATED	----

GENERAL NOTES:

- EMERGENCY EXIT LIGHTS ARE CONNECTED TO THE CORRESPONDING LOCAL LIGHT CIRCUIT
- CONNECTED TO THE UNSWITCHED SIDE OF THE CIRCUIT

LIGHTING FIXTURE SCHEDULE			
LTR	MANUFACTURER	MODEL *	DESCRIPTION
L-1	JUNO	WF6 SWWS	13W LED SWITCHABLE, 4K
L-2	COMMERCIAL ELEC	CAT71	EXTERIOR DOWN LIGHT, 4K
L-3	LITHONIA	MVOLT ELM4L	LED EM LIGHT 3.1 W
L-4	LITHONIA	ECRG RD M6	LED COMBO EXIT LIGHT 4 W

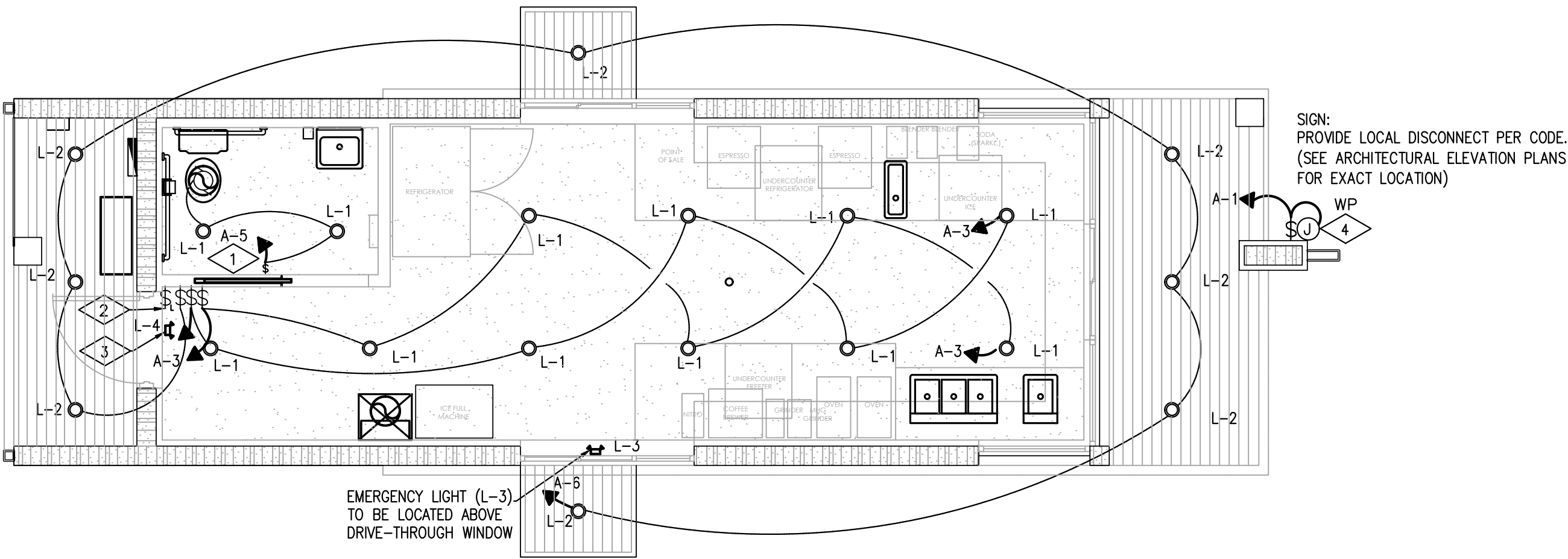
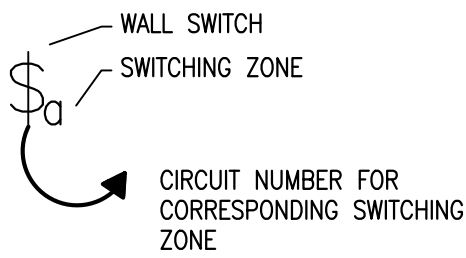
CONTRACTOR MUST VERIFY
ALL CLEARANCES AND
DIMENSIONS IN FIELD

- * OR SIMILAR MANUFACTURER/MODEL OR SERIES. ALL LIGHTING SELECTION ARE TO BE REVIEWED/APPROVED BY THE OWNER PRIOR TO ORDER AND INSTALLATION.

NOTES ON LIGHTING FIXTURE SCHEDULE

- ALL LIGHT FIXTURES MUST BE UL OR ITL TESTED AND LABELED
- VERIFY FIXTURES MOUNTING HEIGHT PRIOR TO INSTALLATION.
- VERIFY FIXTURES FINISH PRIOR TO INSTALLATION.
- ALL RECESSED FIXTURES INSTALLED IN THE BUILDING THERMAL ENVELOPE, IN CEILINGS WHERE INSULATION IS PRESENT, SHALL BE IC RATED AND SEALED OR CASKETED TO PREVENT AIR LEAKAGE TO THE CEILING CAVITY. ALL SEALED FIXTURES MUST BE PROPERLY LABELED NY MANUFACTURER AS 'SEALED' OR AS MEETING ASTM E 283 PER IECC 402.4.3 NON IC RATED AND NOT AIR TIGHT FIXTURES IN SUCH CEILING CAVITIES MUST BE LOCATED INSIDE AN AIR TIGHT SEALED BOX PER IECC 402.3 ALL RECESSED FIXTURES IN CEILING CAVITY WHERE INSULATION IS PRESENT MUST BE IC RATED.
- LED FIXTURES MUST BE TESTED IN ACCORDANCE WITH IESNA LM-80 APPROVED METHOD AND THE LIGHT FIXTURE LIGHT OUTPUT, INPUT POWER ND EFFICIENCY TESTED IN ACCORDANCE WITH IESNA LM-79.LIGHT FACTS MUST BE AVAILABLE WITH FIXTURE FOR VERIFICATION AND SUBMITTED DTD ENGINEER FOR APPROVAL AS REQUIRED.
- THE ELECTRICAL CONTRACTOR IS TO ORDER ALL HARDWARE AND COMPONENTS NECESSARY FOR A FULL AND COMPLETE INSTALLATION AND MOUNTING OF EACH LUMINAIRE.
- ALL BATTERY BACK UP EMERGENCY AND EXIT LIGHTS MUST BE PROVIDED WITH SELF-TEST/SELF-DIAGNOSTIC ELECTRONIC FEATURE.
- BATTERY PACK EMERGENCY LIGHTS MUST HAVE LIGHING CHARACTERISTICS TO PROVIDE A MINIMUM 1 FC ALONG THE PATH OF EGRESS WHEN PLACED AT A MINIMUM DISTANCE APART AS SHOWN ON PLANS. PROVIDE MANUFACTURER'S PHOTOMETRICAL INFORMATION TO CONFIRM FIXTURE PERFORMANCE.

LIGHTING SWITCH DETAIL



ELECTRICAL LIGHTING PLAN

SCALE: 1/4"=1'-0"

KEY NOTES

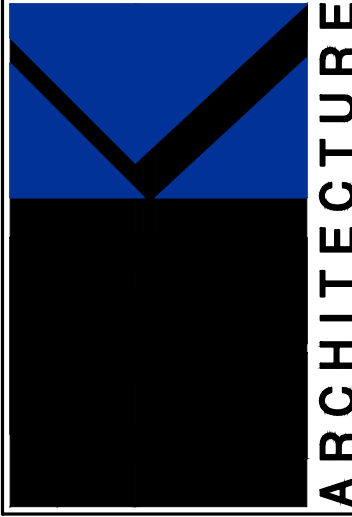
- PROVIDE WALL SWITCH WITH OCCUPANCY SENSOR AND MANUAL ON/OFF SWITCH.
- OCCUPANT OVERRIDE SWITCH PER IECC. IN COMPLIANCE WITH IECC, PROVIDE DESIGN BUILD LIGHTING CONTROL SYSTEM FOR THE RESTAURANT. SYSTEM MUST INCLUDE AN AUTOMATIC SHUT OFF OF ALL LIGHTING EXCEPT FOR THE LIGHTS CONTROLLED LOCALLY WITH WITH OCCUPANCY SENSORS. SYSTEM MUST BE PROVIDED WITH TIME SWITCH WITH TIME-OF-DAY INDEPENDENT PROGRAM SCHEDULE. PROVIDE A SEPARATE LOW VOLTAGE SWITCH TO ENABLE OCCUPANT OVERRIDE OF TIME SWITCH WHICH WILL ALLOW LIGHTS TO REMAIN ON FOR UP TO 2 HOURS WHEN AN OVERRIDE IS INITIATED.
- CONNECT ALL NIGHT LIGHTS, BATTERY PACK EXIT LIGHTS AND BATTERY PACK EMERGENCY LIGHTS TO LOCAL LIGHTING CIRCUIT AHEAD OF SWITCH.
- SIGN : CONTROL WITH TIME SWITCH. PROVIDE LOCAL DISCONNECT PER CODE.

MK Architecture, LLC hereby reserves its common law copyright and other property rights in these plans, designs, arrangements and ideas. These ideas, plans and designs are not to be reproduced, changed or copied in any form or manner whatsoever, nor are they to be assigned to any third party without first obtaining the express written permission from MK Architecture, LLC. Contractor shall verify and be responsible for all dimensions and conditions of the job. MK Architecture, LLC shall be notified in writing of any variations or discrepancies from the dimensions, conditions and specifications shown on these drawings. All construction shall be in accordance with the current Florida Building Code.

No:	REVISIONS
	-
	-
	-
	-
	-

CONSTRUCTION DOCUMENTS FOR
COFFEE RUSH
1189 SW PINE ISLAND ROAD
CAPE CORAL, FL 33991

MK Architecture LLC
8200 College Parkway, Suite 101
Fort Myers, Florida 33919
239.482.2121
AR10564 ID6790
www.MK-ARCH.com

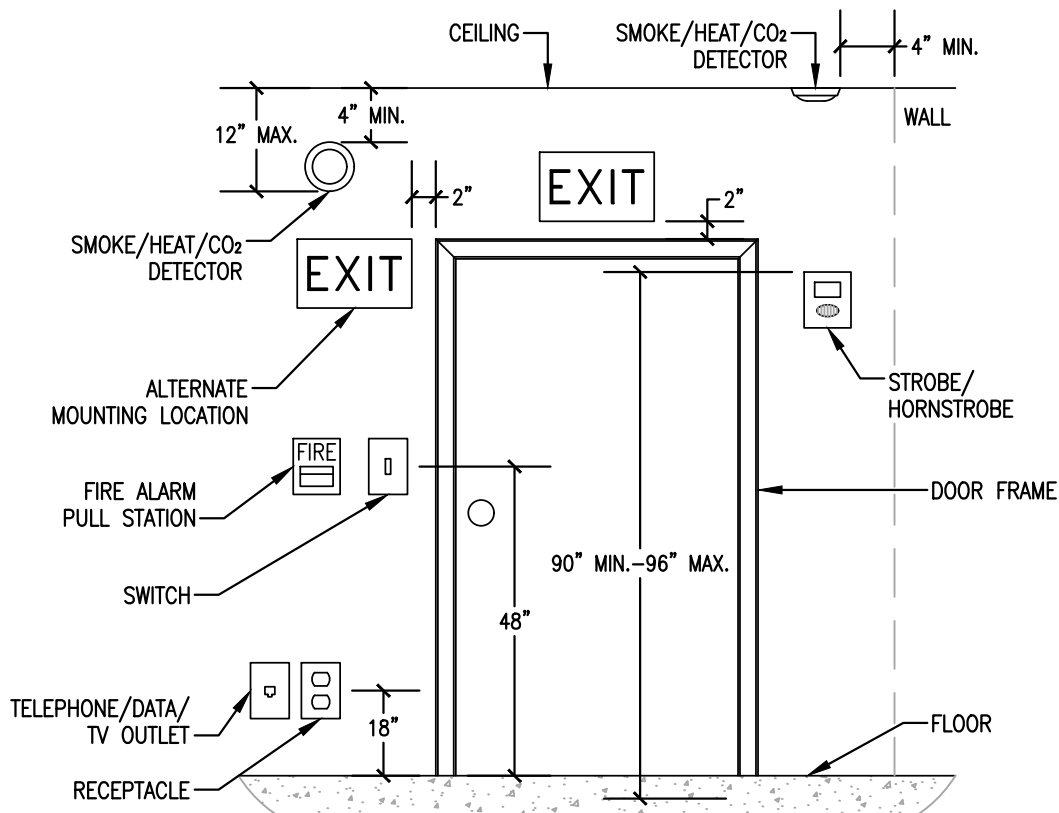


JOB: MK250158
DATE: 08-05-2025
DRWN. BY:
CAD REF:

SHEET
E3

C:\USERS\RTA\ONEDRIVE\DESKTOP\DYNAMIC\COFFEE RUSH\CAD\ELECTRICALSET.DWG, August 29, 2025

ELECTRICAL FEEDER/WIRE SCHEDULE					
O.C.P.D.** AMPERE RATING	2 WIRE WITH GROUND	SYMBOL	3 WIRE WITH GROUND	SYMBOL	4 WIRE WITH GROUND
20A	2-#12, #12G. IN 3/4".C.	A20	3-#12, #12G. IN 3/4".C.	B20	4-#12, #12G. IN 3/4".C.
25A	2-#10, #10G. IN 3/4".C.	A25	3-#10, #10G. IN 3/4".C.	B25	4-#10, #10G. IN 3/4".C.
30A	2-#10, #10G. IN 3/4".C.	A30	3-#10, #10G. IN 3/4".C.	B30	4-#10, #10G. IN 3/4".C.
35A	2-#8, #10G. IN 3/4".C.	A35	3-#8, #10G. IN 3/4".C.	B35	4-#8, #10G. IN 3/4".C.
40A	2-#8, #10G. IN 3/4".C.	A40	3-#8, #10G. IN 3/4".C.	B40	4-#8, #10G. IN 3/4".C.
45A	2-#6, #10G. IN 3/4".C.	A45	3-#6, #10G. IN 3/4".C.	B45	4-#6, #10G. IN 1".C.
50A	2-#6, #10G. IN 3/4".C.	A50	3-#6, #10G. IN 3/4".C.	B50	4-#6, #10G. IN 1".C.
60A	2-#6, #10G. IN 3/4".C.	A60	3-#6, #10G. IN 3/4".C.	B60	4-#6, #10G. IN 1".C.
70A	2-#4, #8G. IN 1".C.	A70	3-#4, #8G. IN 1".C.	B70	4-#4, #8G. IN 1 1/4".C.
80A	2-#3, #8G. IN 1 1/4".C.	A80	3-#3, #8G. IN 1 1/4".C.	B80	4-#3, #8G. IN 1 1/4".C..
90A	2-#2, #8G. IN 1 1/4".C.	A90	3-#2, #8G. IN 1 1/4".C.	B90	4-#2, #8G. IN 1 1/2".C.
100A	2-#2, #8G. IN 1 1/4".C.	A100	3-#2, #8G. IN 1 1/4".C.	B100	4-#2, #8G. IN 1 1/2".C.
125A	2-#1, #6G. IN 1 1/2".C.	A125	3-#1, #6G. IN 1 1/2".C.	B125	4-#1, #6G. IN 1 1/2".C.
150A		A150	3-#1/0, #6G. IN 1 1/2".C.	B150	4-#1/0, #6G. IN 2".C.
175A		A175	3-#2/0, #6G. IN 2".C.	B175	4-#2/0, #6G. IN 2".C.
200A		A200	3-#3/0, #6G. IN 2".C.	B200	4-#3/0, #6G. IN 2".C.
225A		A225	3-#4/0, #4G. IN 2 1/2".C.	B225	4-#4/0, #4G. IN 2 1/2".C.
250A		A250	3-250MCM, #4G. IN 2 1/2".C.	B250	4-250MCM, #4G. IN 3".C.
300A		A300	3-#350 MCM, 1-#4 Cu G. IN 3".C.	B300	4-#350 MCM, 1-#4 Cu G. IN 3".C.
350A		A350	3-#500 MCM, 1-#3 Cu G. IN 3 1/2".C.	B350	4-#500 MCM, 1-#3 Cu G. IN 3 1/2".C.
400A		A400	3-#500 MCM, 1-#3 Cu G. IN 3 1/2".C.	B400	4-#500 MCM, 1-#3 Cu G. IN 3 1/2".C.
450A		A450	2 SETS: 3-#4/0, 1-#2 Cu G. EACH IN 2 1/2".C.	B450	2 SETS: 4-#4/0, 1-#2 Cu G. EACH IN 2 1/2".C.
500A		A500	2 SETS: 3-#250MCM, 1-#2 Cu G. EACH IN 3".C.	B500	2 SETS: 4-#250MCM, 1-#2 Cu G. EACH IN 3".C.
600A		A600	2 SETS: 3-#350MCM, 1-#1 Cu G. EACH IN 3".C.	B600	2 SETS: 4-#350MCM, 1-#1 Cu G. EACH IN 3".C.
700A		A700	2 SETS: 3-#500 MCM, 1-#1/0 Cu G. EACH IN 3 1/2".C.	B700	2 SETS: 4-#500MCM, 1-#1/0 Cu G. EACH IN 3 1/2".C.
800A		A800	2 SETS: 3-#500 MCM, 1-#1/0 Cu G. EACH IN 3 1/2".C.	B800	2 SETS: 4-#500MCM, 1-#1/0 Cu G. EACH IN 3 1/2".C.
1000A		A1000	3 SETS: 3-#400 MCM, 1-#2/0 Cu G. EACH IN 3".C.	B1000	3 SETS: 4-#400MCM, 1-#2/0 Cu G. EACH IN 3".C.
1200A		A1200	4 SETS: 3-#350MCM, 1-#3/0 Cu G. EACH IN 3".C.	B1200	4 SETS: 4-#350MCM, #3/0 Cu G. EACH IN 3 1/2".C.
1600A		A1600	5 SETS: 3-#400 MCM, 1-#4/0 Cu G EACH IN 3".C.	B1600	5 SETS: 4-#400MCM, #4/0 Cu G. EACH IN 3-1/2".C.
G1	1-#1/0 G IN 1".C.	G2	1-#2/0 G IN 1".C.	G3	1-#3/0 G IN 1".C.
X INDICATES NO GROUND WIRE. X INDICATES NO CONDUIT					
** OVERCURRENT PROTECTION DEVICE 1. ON ALL SINGLE PHASE CIRCUITS, INCREASE ONE WIRE SIZE FOR EACH 100 FEET OF CIRCUIT LENGTH. MAKE THE NECESSARY CONDUIT CHANGES TO REMAIN WITHIN THE RACEWAY FILL REQUIREMENTS. 2. CONDUIT SIZES SHOWN IN THIS SCHEDULE ARE BASED ON THIN COPPER CONDUCTORS. 3. FOR UNDERGROUND FEEDERS, USE XHHW-2 90°C CONDUCTORS. ADJUST CONDUIT SIZE AS NECESSARY TO REMAIN WITHIN THE RACEWAY FILL REQUIREMENTS.					



TYPICAL DEVICE MOUNTING DETAIL
N.T.S.



OCCUPANCY SENSOR-SWITCH OVERRIDE DETAIL
N.T.S.



ELECTRICAL RISER
SCALE: NONE

Bus Size:400A Type: NEMA 1		Distribution Board Schedule										Location: REAR ENTRY	
Main Breaker: MCB		<div>"B"</div>										Connected Load: 74,959	
Volts/Phase: 208/120/3 ph												Demand Load: 67,711	
AIC Rating: 22K												Demand Amps: 200	
Mounting: Flush												Notes: FIELD VERIFY EXACT LOCATION	
Equipment Served	Load	BKR	CKT	A	B	C	CKT	BKR	Load	Equipment Served			
SIGN	1,200	1p-20	1				2	1p-20	1200	SHOW WINDOW			
PREP AREA LIGHTS	120	1p-20	3				4	1p-20	1200	SHOW WINDOW			
BATHROOM LIGHTS AND FAN	48	1p-20	5				6	1p-20	400	EXTERIOR LIGHTS			
EXPRESSO MACHINE	4,600	2p-30	7				8	2p-30	4600	ESPRESSO MACHINE			
---	--	--	9				10	--	---	---			
TWIN COFFEE BREWER	5200	2p-40	11				12	1p-20	744	REACH IN REFRIGERATOR			
---	--	--	13				14	1p-20	1440	UPRIGHT ICE MACHINE			
HIGH SPEED OVEN	6,000	2p-40	15				16	2p-40	6000	HIGH SPEED OVEN			
---	--	--	17				18	--	---	---			
UNDERCOUNTER ICE MAKER	1032	1p-20	19				20	1p-20	336	NITRO DISPENSER			
BULK COFFEE GRINDER	1,080	1p-20	21				22	1p-20	250	CO2 WATER DISPENSER			
UNDERCOUNTER REFRIGERATOR	240	1p-20	23				24	1p-20	276	UNDERCOUNTER FREEZER			
VITAMIX	800	1p-20	25				26	1p-20	800	VITAMIX			
POINT OF SALE	400	1p-20	27				28	1p-20	1320	TWIN COFFEE GRINDER			
DISPOSAL OUTLET	180	1p-20	29				30	1p-20	1440	CONVENIENCE OUTLETS			
MINI SPLIT	2829	2p-30	31				32	3p-100	31200	WATER HEATER			
---	--	--	33				34	---	---	---			
EXHAUST MOP SINK	24	1p-20	35				36	---	---	---			
			37				38						
			39				40						
			41				42						
		23,753											

51206

LOAD SUMMARY			
CONTINUOUS LOADS	DEMAND		
	LIGHTING	3,300 VA	
	MISC	200 VA	
		3,500 VA	@125% 4,375 VA
NON-CONTINUOUS LOADS	RECEPTACLES	5,784	
	MISC	5,000	
	LARGEST COOLING/HEATING	2,829	
	LARGEST MOTOR (ADD 25%)	0	
	ELEVATORS	0	
	KITCHEN EQUIPMENT	34,898	
	SUBPANEL/SPARES	19,200	
		67,711 VA	@100% 67,711 VA
			72,086 VA
PHASE		3	VOLT 208
MINIMUM FEEDER AMPACITY =			200 A
SPECIFIED FEEDER AMPACITY =			400 A

MK Architecture, LLC hereby reserves its common law copyright and other property rights in these plans, designs, arrangements and ideas. These ideas, plans and designs are not to be reproduced, changed or copied in any form or manner whatsoever, nor are they to be assigned to any third party without first obtaining the express written permission from MK Architecture, LLC. Contractors shall verify and be responsible for all dimensions and conditions of the job. MK Architecture, LLC shall be notified in writing of any variations or discrepancies from the dimensions, conditions and specifications shown on these drawings. All construction shall be in accordance with the current Florida Building Code.

No:	REVISIONS
△	-
△	-
△	-
△	-
△	-

CONSTRUCTION DOCUMENTS FOR

COFFEE RUSH

1189 SW PINE ISLAND ROAD

CAPE CORAL, FL 33991

MK Architecture LLC

8200 College Parkway, Suite 101

Fort Myers, Florida 33919

239.482.2121

AR10564 ID6790

www.MK-ARCH.com

ARCHITECTURE

JOB:	MK250158
DATE:	08-05-2025
DRWN. BY:	
CAD REF:	

SHEET

E4